

HYDRAULIC CHAIN CUTTERS



- ✓ Maximum working pressure 700 bar.
- ✓ CK0016 model includes an integral built-in hand pump.
Other models are powered by an external hand, air, electric, or petrol pump.
- ✓ CK0216, CK0230 and CK0250 models are double acting, for fast retraction.
- ✓ CK0116 and CK0216 are not equipped with handle.
- ✓ All models are provided with standard female coupler AZ3140.

Z12107
Air Hydraulic Pump



P.70

HBM
Manual Powerpack



P.72

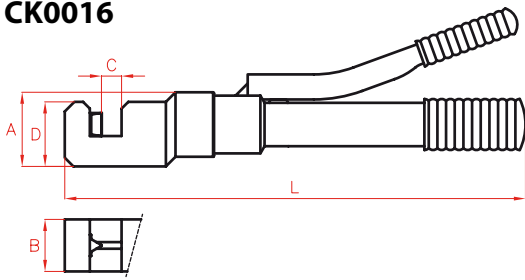
AP
Hydraulic Hoses



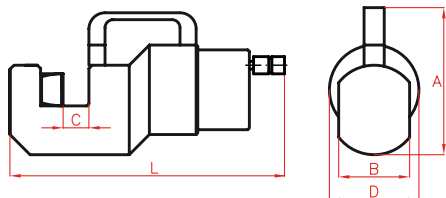
P.84



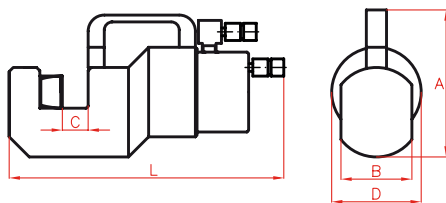
CK0016



CK0116 - CK0130



CK0216 - CK0230 - CK0250



Type	CK
Capacity	13 - 112 ton
Chain	max. 50 mm
Max. pressure	700 bar

Model	Replacement Blades	
	Mobile	Fixed
CK0016	CRK161	CRK162
CK0116	CRK161	CRK162
CK0130	CRK301	CRK302
CK0216	CRK161	CRK162
CK0230	CRK301	CRK302
CK0250	CRK501	CRK502

* maximum ø

Model	Capacity	Oil Cap.	Weight	A	B	C	D	L	Chain *	Strength	Bar *	Strength
LARZEP	kN	cm ³	kg	mm	mm	mm	mm	mm	mm	by grades	mm	N/mm ²
CK0016	135	-	5,8	81,5	54	19,5	68	489	19	28 - 43	19	700
											15	1.000
									14	60 - 80	13	1.400
CK0116	135	38	4,8	81,5	54	19,5	68	290	19	28 - 43	19	700
											15	1.000
									14	60 - 80	13	1.400
CK0130	390	182	16,8	183	88	31	113	360	30	28 - 43	30	700
											25	1.000
									20	60 - 80	20	1.400
CK0216	135	38	8,4	126	54	19,5	81	343	19	28 - 43	19	700
											15	1.000
									14	60 - 80	13	1.400
CK0230	345	161	16,0	183	88	31	113	412	30	28 - 43	30	700
											25	1.000
									20	60 - 80	20	1.400
CK0250	1.120	842	68,0	265	120	52	207	475	50	28 - 43	50	700
											45	1.000
									40	60 - 80	40	1.400
										35	1.600	