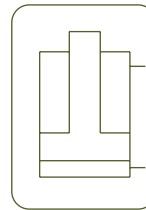


## ALUMINIUM DOUBLE ACTING CYLINDERS



- ✓ Capacities from 50 and 100 ton, strokes up to 300 mm.
- ✓ Made from high strength aluminium alloy.
- ✓ All aluminium parts are treated to improve resistance and extend working life.
- ✓ Lightweight. Over 40% weight reduction when compared with steel equivalent.
- ✓ Fitted with steel base plate and saddle for wear resistance.
- ✓ Internal safety valve to prevent accidental over-pressure.
- ✓ Not suitable for high-cycle applications.



**ALUM. DOUBLE ACTING CYLINDERS**



Type	<b>DDA</b>
Capacity	<b>50 - 100 ton</b>
Stroke	<b>50 - 300 mm</b>
Max. pressure	<b>700 bar</b>

DDA CYLINDERS



Step by step aluminium cylinders. Stage lifting.



**DDC**  
Double Acting High Tonnage Cylinders



P.44

**D**  
Double Acting Cylinders



P.42

**DAH**  
Aluminium Double Acting  
Hollow Piston Cylinders



P.54

**AZ04**  
Optional Tilting Saddles available



P.90

**HBM / HBE**  
Powerpacks



P.72

**Z22107**  
Air Hydraulic Pumps



P.70

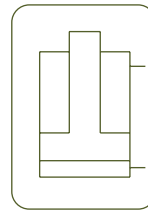
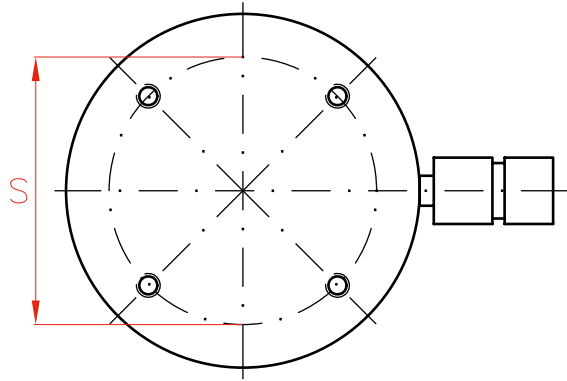
**X**  
Double Acting Hand Pumps



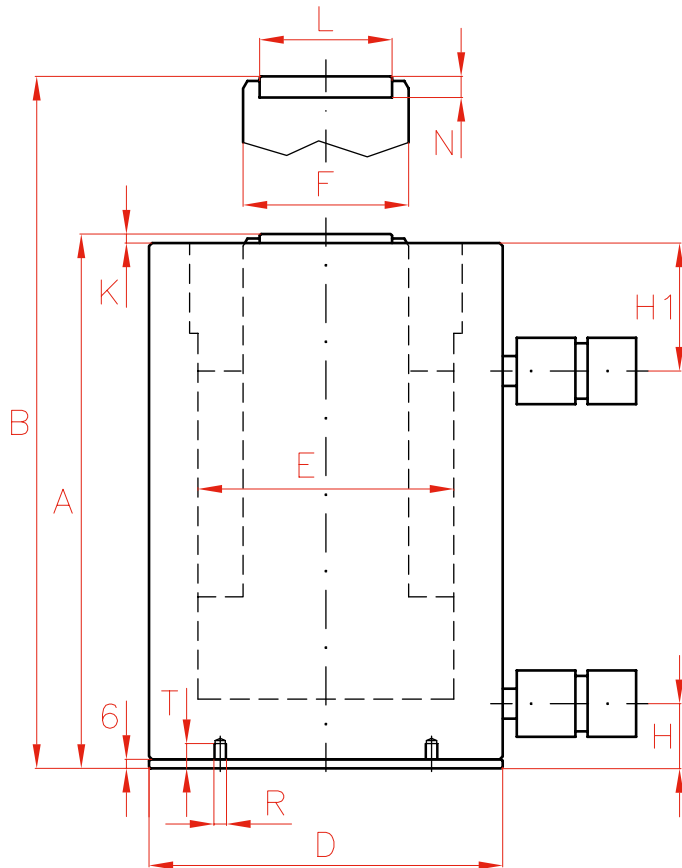
P.66

Capacity	Stroke	Model	Capacity (kN)	Oil Cap.	A	
ton	mm	LARZEP	Push	cm <sup>3</sup>	mm	
<b>50</b>	50	<b>DDA05005</b>	487	354	198	
	100	<b>DDA05010</b>	487	709	248	
	150	<b>DDA05015</b>	487	1.063	298	
	200	<b>DDA05020</b>	487	1.418	348	
	250	<b>DDA05025</b>	487	1.772	398	
	300	<b>DDA05030</b>	487	2.126	448	
<b>100</b>	50	<b>DDA10005</b>	911	664	230	
	100	<b>DDA10010</b>	911	1.327	280	
	150	<b>DDA10015</b>	911	1.991	330	
	200	<b>DDA10020</b>	911	2.655	380	
	250	<b>DDA10025</b>	911	3.318	430	
	300	<b>DDA10030</b>	911	3.982	480	



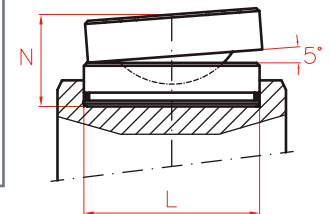


Type	<b>DDA</b>
Capacity	<b>50 - 100 ton</b>
Stroke	<b>50 - 300 mm</b>
Max. pressure	<b>700 bar</b>



OPTIONAL TILTING SADDLES

Model	L	N	Weight
LARZEP	mm	mm	kg
<b>AZ0402</b>	61	39	0,8
<b>AZ0404</b>	88	47	2,2



P.90

B	D	E	F	H	H1	K	L	N	S	R	T	Area	Weight	Model	With tilting saddle	
mm	mm	mm	mm	mm	mm		mm	mm	mm	mm	mm	cm <sup>2</sup>	kg	LARZEP	A	Model
248	135	95	75	26	60	7	61	12	115	M6	19	71	8,0	<b>DDA05005</b>	225	AZ0402
348	135	95	75	26	60	7	61	12	115	M6	19	71	9,7	<b>DDA05010</b>	275	AZ0402
448	135	95	75	26	60	7	61	12	115	M6	19	71	11,3	<b>DDA05015</b>	325	AZ0402
548	135	95	75	26	60	7	61	12	115	M6	19	71	12,9	<b>DDA05020</b>	375	AZ0402
648	135	95	75	26	60	7	61	12	115	M6	19	71	14,6	<b>DDA05025</b>	425	AZ0402
748	135	95	75	26	60	7	61	12	115	M6	19	71	16,2	<b>DDA05030</b>	475	AZ0402
280	180	130	110	32	70	5	88	14	160	M6	19	133	16,1	<b>DDA10005</b>	263	AZ0404
380	180	130	110	32	70	5	88	14	160	M6	19	133	19,2	<b>DDA10010</b>	313	AZ0404
480	180	130	110	32	70	5	88	14	160	M6	19	133	22,2	<b>DDA10015</b>	363	AZ0404
580	180	130	110	32	70	5	88	14	160	M6	19	133	25,3	<b>DDA10020</b>	413	AZ0404
680	180	130	110	32	70	5	88	14	160	M6	19	133	28,3	<b>DDA10025</b>	463	AZ0404
780	180	130	110	32	70	5	88	14	160	M6	19	133	31,3	<b>DDA10030</b>	513	AZ0404