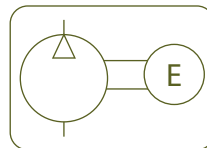


BATTERY POWERED PORTABLE HYDRAULIC PUMP



Type **HAB**

Capacity **2,3 litres**

Max. pressure **700 bar**

- ✓ 2,3 litre tank.
- Internal safety valve set at 700 bar to prevent overpressure.
- 3/2 valve with load holding position.
- Lightweight and easy portability.
- For use with cutters and crimping tools.
- Supplied with 2 batteries, 230V charger and a metal box.



Oil Capacity	Flow at 700 bar	Model	Voltage	Battery	Length	Width	Height	Weight
l	l/min	LARZEP	V	Ah	mm	mm	mm	kg
2,3	0,16	HAB1102	18	4	220	170	300	8,5

Battery	Voltage	Battery Life	Charger			Charging Temperature
Li-ion		Al/Steel Cable 570/40	Charging Time	Input	Output	
Ah	V	Cuts	Minutes	V (AC) / Hz	V (DC) / A	°C
4	18	70	40	220-240 / 50-60	18 / 4,0	-10 to 40