

SINGLE ACTING LOW HEIGHT CYLINDERS, LOAD OR SPRING RETURN

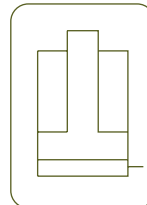
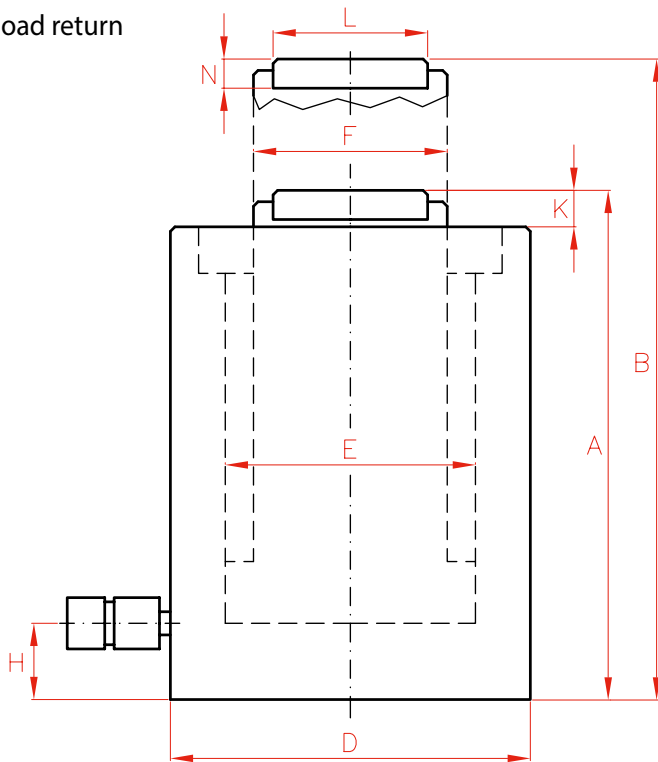


- ✓ Capacities from 10 to 100 ton, strokes up to 150 mm.
- ✓ Two versions: **SP** for load return, and **SMP** for spring return.
- ✓ Low profile for use in confined spaces: machinery positioning, tool fastening, load tests.
- ✓ Body and saddle black nitrided to improve corrosion and wear resistance.
- ✓ Optional tilting saddles can be mounted on 30 to 100 ton models.

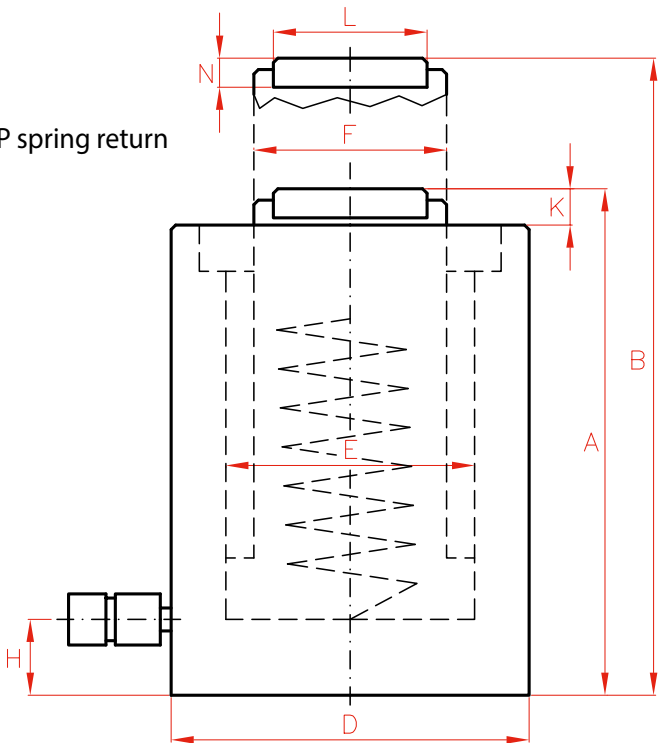
| Capacity | | Stroke | Model | Model | Oil Cap. | A | B | D | E | F | H | K | |
|----------|-----|--------|---------|----------|-----------------|-----|-----|-----|-----|-----|-----|----|--|
| ton | kN | mm | LARZEP | LARZEP | cm ³ | mm | mm | mm | mm | mm | mm | mm | |
| 10 | 109 | 40 | SP01004 | SMP01004 | 64 | 89 | 129 | 66 | 45 | 36 | 14* | 2 | |
| 20 | 214 | 40 | SP02004 | SMP02004 | 125 | 101 | 141 | 90 | 63 | 56 | 14* | 2 | |
| 30 | 303 | 60 | SP03006 | SMP03006 | 265 | 125 | 185 | 102 | 75 | 60 | 14* | 2 | |
| 50 | 486 | 60 | SP05006 | SMP05006 | 425 | 125 | 185 | 127 | 95 | 80 | 16* | 2 | |
| 100 | 911 | 60 | SP10006 | SMP10006 | 796 | 141 | 201 | 175 | 130 | 110 | 26 | 2 | |
| | | 150 | - | SMP10015 | 1.990 | 254 | 404 | 175 | 130 | 110 | 26 | 2 | |



SP load return



SMP spring return



SINGLE ACTING CYLINDERS



| | |
|---------------|-----------------|
| Type | SP - SMP |
| Capacity | 10 - 100 ton |
| Stroke | 40 - 150 mm |
| Max. pressure | 700 bar |

J Cylinder and pump sets



P.60

SX - SMX Single Acting Low Profile Cylinders



P.24

AZ3 Coupler inclined 10°



P.86

AZ04 Optional Tilting Saddles



P.90

| | L | N | Area cm ² | Weight kg | Model | Model | With tilting saddle | |
|--|----|----|-------------------------|--------------|----------------|-----------------|---------------------|--------|
| | mm | mm | | | LARZEP | LARZEP | A | Model |
| | 30 | - | 16 | 3 | SP01004 | SMP01004 | - | - |
| | 42 | - | 31 | 5 | SP02004 | SMP02004 | - | - |
| | 45 | 11 | 44 | 8 | SP03006 | SMP03006 | 150 | AZ0401 |
| | 61 | 12 | 71 | 12 | SP05006 | SMP05006 | 152 | AZ0402 |
| | 88 | 14 | 133 | 25 | SP10006 | SMP10006 | 174 | AZ0404 |
| | 88 | 14 | 133 | 43 | - | SMP10015 | 287 | AZ0404 |