

# M100-72-ATLAS



## Victoria

A: 27 Metcalf Street, Dandenong South, Victoria, 3175

P: (03) 9796 3744

## Western Australia

A: 260 Allen Road Forrestdale, Western Australia, 6112

P: (08) 9418 4988

## Queensland

A: Unit 8, 315 Archerfield Road, Richlands, Queensland, 4077

P: (03) 9796 3744

## New South Wales

A: Unit D, 26 Penny Place, Arndell Park, New South Wales, 2148

P: (03) 9796 3744



E: [sales@abdexhydraulics.com.au](mailto:sales@abdexhydraulics.com.au)

# M100-72-ATLAS

The Mammut ATLAS series makes it possible to work safely under the lifted vehicle, without the use of jack stands or support blocks.



## M100-72-ATLAS

|                       |                           |
|-----------------------|---------------------------|
| Capacity:             | 100 t / 110.2 ton         |
| Net Weight:           | 427 kg / 941 lb           |
| Working Air Pressure: | 10-12 bar / 145 - 174 psi |
| Air Consumption:      | 600 nl/min                |
| Min. Height:          | 722 mm / 28.4 in          |
| Max. Height:          | 1062 mm / 46.9 in         |
| Number of Pistons     | 1                         |
| Pistons Stroke:       | 340 mm / 13.3 in          |

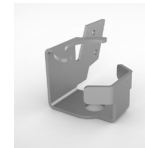
- Lightweight, quiet, compact and easy to manoeuvre.
- Two in one jack that can also mechanically lock and turn into a jack stand.
- Mechanical safety lock sealed inside the cylinder unit to protect it from dirt and dust.
- Remote control that operates lift and lock.
- "Safe Load" LED indicators.
- Folding handle.
- Designed for tough Australian conditions.
- Pneumatic tyres for easy operation.

## Accessories



### M4935

Extension Holder Right



### M4936

Extension Holder Left



### M4930

Extension 200 mm



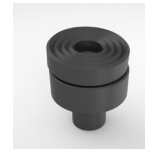
### M4931

Extension 250 mm



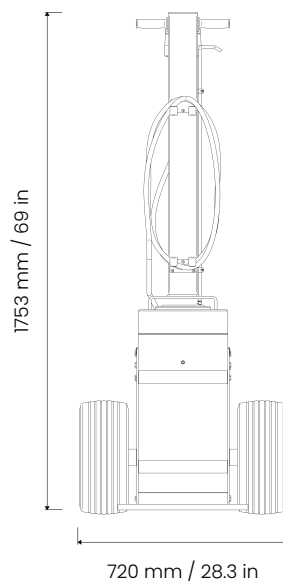
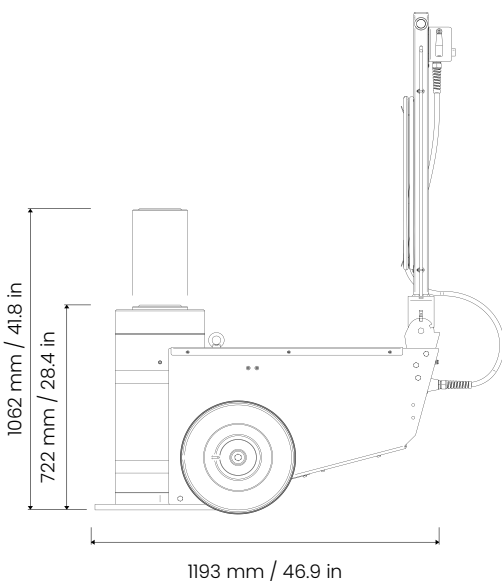
### M4932

Extension 300 mm



### A04495

Tilt Saddle



sales@abdexhydraulics.com.au



www.mammut.com.au