



# ACCESSORIES

*A wide range of accessories complete our line of products making them able to satisfy every need.*



## Victoria

A: 27 Metcalf Street, Dandenong South, Victoria, 3175      P: (03) 9796 3744

## Western Australia

A: 260 Allen Road Forrestdale, Western Australia, 6112      P: (08) 9418 4988

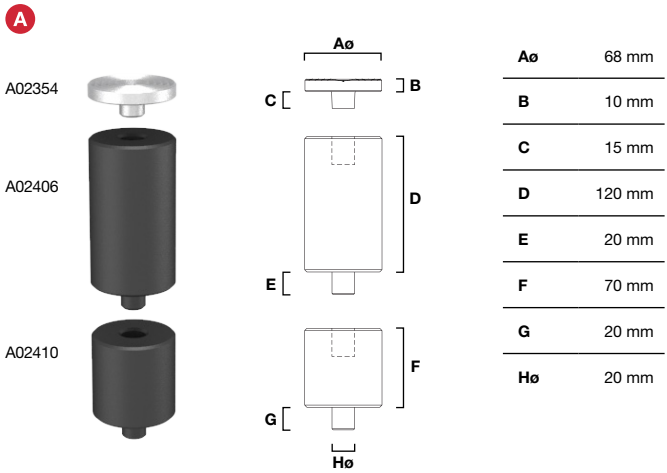
## Queensland

A: Unit 8, 315 Archerfield Road, Richlands, Queensland, 4077      P: (03) 9796 3744

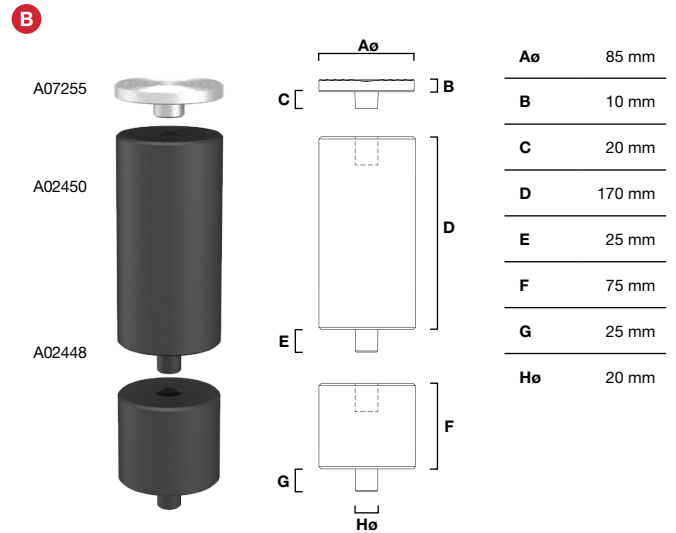
## New South Wales

A: Unit D, 26 Penny Place, Arndell Park, New South Wales, 2148      P: (03) 9796 3744

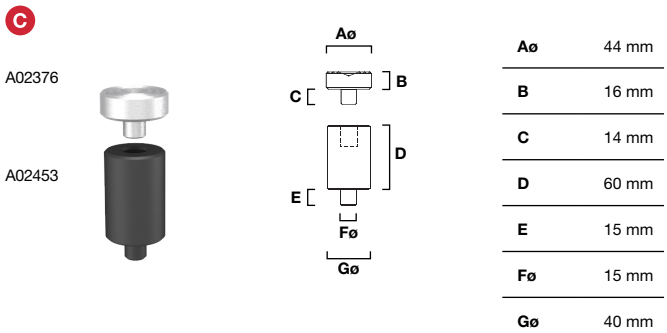
E: [sales@abdexhydraulics.com.au](mailto:sales@abdexhydraulics.com.au)



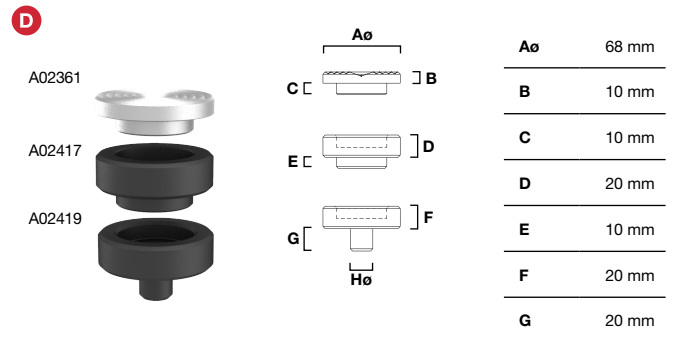
COD.	Max capacity	Description
A02354	80t	Extension
A02406	80t	Extension
A02410	80t	Extension



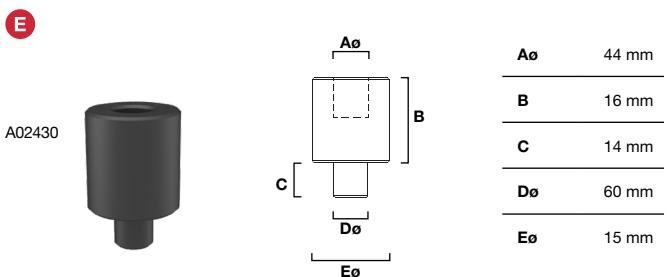
COD.	Max capacity	Description
A07255	80t	Extension
A02450	80t	Extension
A02448	80t	Extension



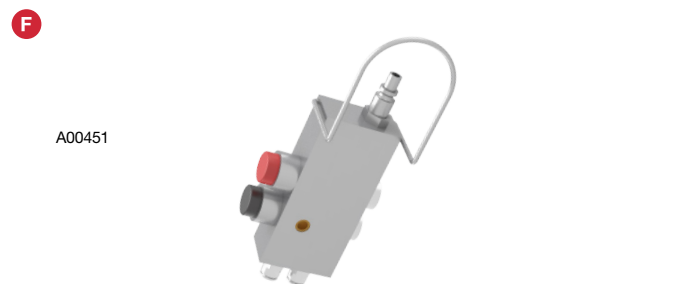
COD.	Max capacity	Description
A02376	20t	Extension
A02453	20t	Extension



COD.	Max capacity	Description
A02361	80t	Extension
A02417	80t	Extension
A02419	80t	Extension





COD.	Max capacity	Description
------	--------------	-------------




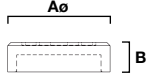
COD.	Description
A00451	Remote control A 2.5 m pipe is necessary to work safely in all situations.

\*\*Consult the ACCESSORY COMPATIBILITY TABLE at the end of the catalogue to find out which accessories are available for your Cattini jack.

**G**  **H** 

A00496                      A00502


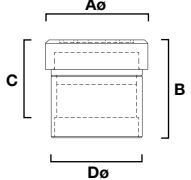
COD.	Max capacity	Description
A00496	80t	Pneumatic wheels
A00502	80t	Pneumatic wheels

**I**  

A02374

<b>Aø</b>	109,5 mm
<b>B</b>	19,5 mm


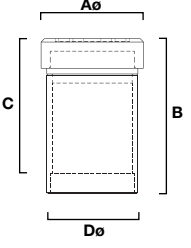
COD.	Max capacity	Description
A02374	2t	Rubber plate

**J**  

A02429

<b>Aø</b>	109,5 mm
<b>B</b>	86 mm
<b>C</b>	68 mm
<b>Dø</b>	80 mm


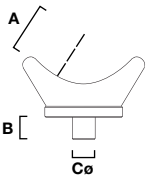
COD.	Max capacity	Description
A02429	2t	Extension with rubber plate

**K**  

A02428

<b>Aø</b>	109,5 mm
<b>B</b>	86 mm
<b>C</b>	118 mm
<b>Dø</b>	80 mm


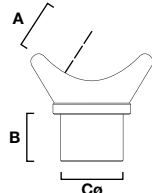
COD.	Max capacity	Description
A02428	2t	Extension with rubber plate

**L**  

A00875

<b>A</b>	45 mm
<b>B</b>	20 mm
<b>Cø</b>	20 mm


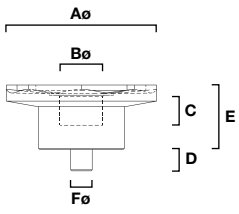
COD.	Max capacity	Description
A00875	80t	Plate for vehicles with round axle

**M**  

A04270

<b>A</b>	45 mm
<b>B</b>	50 mm
<b>Cø</b>	55 mm


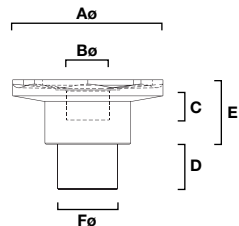
COD.	Max capacity	Description
A04270	80t	Plate for vehicles with round axle

**N**  

A00873

<b>Aø</b>	140 mm
<b>Bø</b>	40 mm
<b>C</b>	27 mm
<b>D</b>	20 mm
<b>E</b>	60 mm
<b>Fø</b>	20 mm

COD.	Max capacity	Description
A00873	80t	Plate for vehicles with central lubrication with cap

**O**  

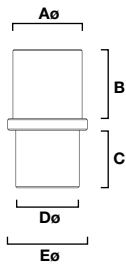
A04276

<b>Aø</b>	140 mm
<b>Bø</b>	40 mm
<b>C</b>	27 mm
<b>D</b>	50 mm
<b>E</b>	60 mm
<b>Fø</b>	55 mm

COD.	Max capacity	Description
A04276	80t	Plate for vehicles with central lubrication with cap

**P**

A01754



<b>Aø</b>	60 mm
<b>B</b>	60 mm
<b>C</b>	50 mm
<b>Dø</b>	55 mm
<b>Eø</b>	69 mm

COD.

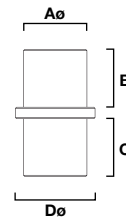
A01754

Description

Adaptor

**Q**

A01758



<b>Aø</b>	55 mm
<b>B</b>	50 mm
<b>C</b>	50 mm
<b>Dø</b>	69 mm

COD.

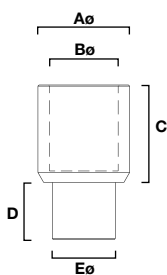
A01758

Description

Adaptor

**R**

A01760



<b>Aø</b>	80 mm
<b>Bø</b>	60 mm
<b>C</b>	85 mm
<b>D</b>	50 mm
<b>Eø</b>	55 mm

COD.

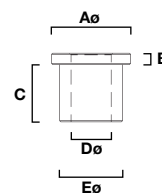
A01760

Description

Adaptor

**S**

A01762



<b>Aø</b>	69 mm
<b>B</b>	10 mm
<b>C</b>	50 mm
<b>Dø</b>	35 mm
<b>Eø</b>	55 mm

COD.

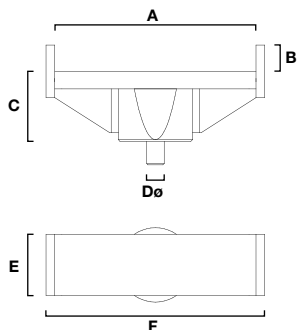
A01762

Description

Adaptor

**T**

A01777



<b>A</b>	230 mm
<b>B</b>	30 mm
<b>C</b>	80 mm
<b>Dø</b>	20 mm
<b>E</b>	70 mm
<b>F</b>	250 mm

COD.

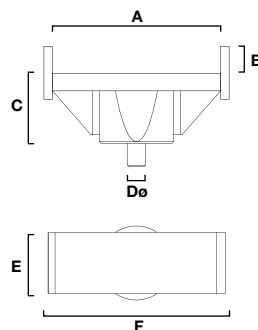
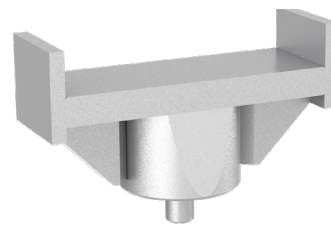
A01777

Description

Adaptor

**U**

A01778



<b>A</b>	190 mm
<b>B</b>	30 mm
<b>C</b>	80 mm
<b>Dø</b>	20 mm
<b>E</b>	70 mm
<b>F</b>	210 mm

COD.

A01778

Description

Adaptor

\*\*Consult the ACCESSORY COMPATIBILITY TABLE at the end of the catalogue to find out which accessories are available for your Cattini jack.

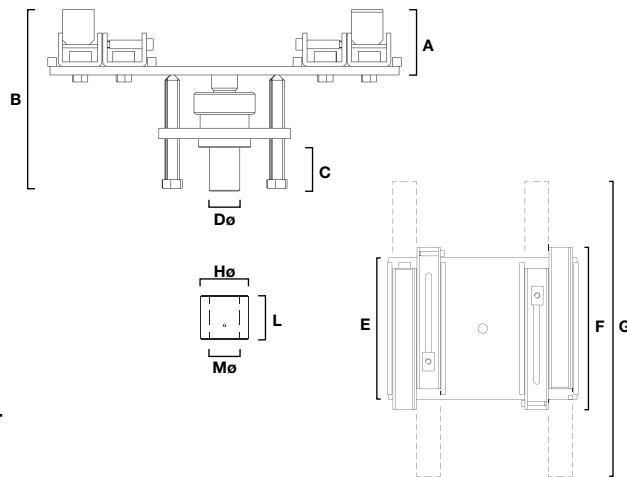
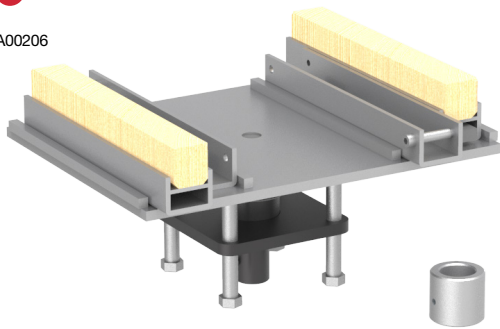


www.jakjacks.com.au

E: sales@abdexhydraulics.com.au

**V**

A00206



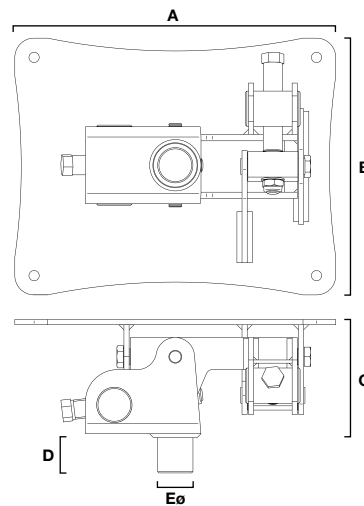
<b>A</b>	75 mm
<b>B</b>	208 mm
<b>C</b>	50 mm
<b>D<math>\varnothing</math></b>	35 mm
<b>E</b>	300 mm
<b>F</b>	400 mm
<b>G</b>	625 mm
<b>H<math>\varnothing</math></b>	54,7 mm
<b>L</b>	50 mm
<b>M<math>\varnothing</math></b>	35 mm

COD. Description

A00206 Adjustable plate with ropes for the removal and maintenance of transmissions, gears, differentials.

**W**

A00207



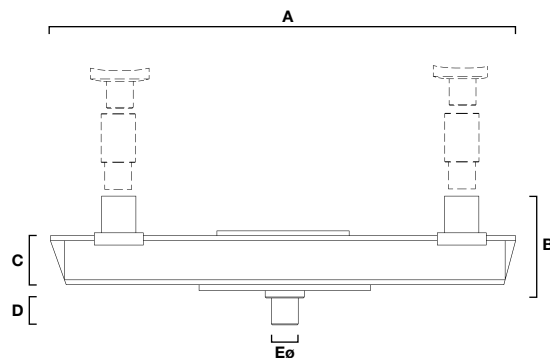
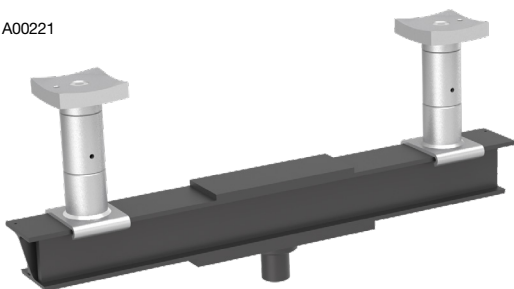
<b>A</b>	500 mm
<b>B</b>	400 mm
<b>C</b>	184 mm
<b>D</b>	55 mm
<b>E<math>\varnothing</math></b>	55 mm

COD. Description

A00207 Adjustable plate with chains for the removal and maintenance of transmissions, gears, differentials. Capacity: 1.5t

**X**

A00221



<b>A</b>	950 mm
<b>B</b>	211 mm
<b>C</b>	100 mm
<b>D</b>	55 mm
<b>E<math>\varnothing</math></b>	55 mm
<b>F</b>	120 mm
<b>G</b>	120 mm
<b>H<math>\varnothing</math></b>	69,5 mm
<b>L</b>	100 mm
<b>M</b>	70 mm
<b>N<math>\varnothing</math></b>	55 mm
<b>O</b>	100 mm
<b>P<math>\varnothing</math></b>	55 mm
<b>Q<math>\varnothing</math></b>	70 mm
<b>R</b>	101,3 mm

COD. Description

A00207 Two points jacking beam. Capacity:15t .

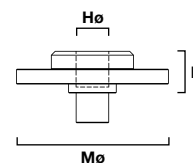
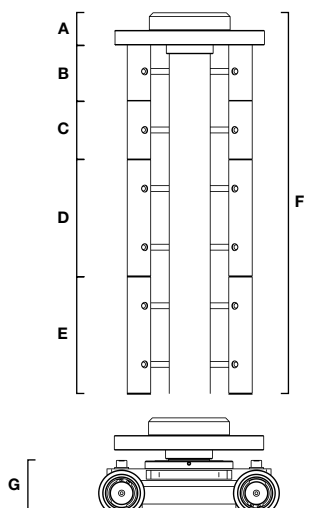
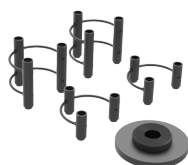
# KIT SAFETY BLOCK SYSTEM

Among the various accessories we have designed a modular and easy-to-use blocking system (A05951 e A05952) capable of safely lifting any kind of load, turning the jack into a real support column.



**Y**

A05951

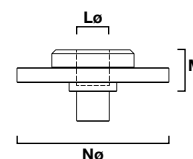
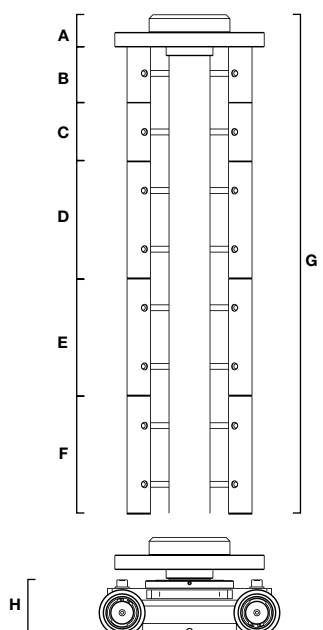


<b>A</b>	60 mm
<b>B</b>	100 mm
<b>C</b>	100 mm
<b>D</b>	200 mm
<b>E</b>	200 mm
<b>F</b>	660 mm
<b>G</b>	160 mm
<b>H</b>	55 mm
<b>Lo</b>	70 mm
<b>M</b>	225 mm

\*Solo per YAK 1615H e 1620H.  
\*YAK 1615H and 1620H only.

**Z**

A05952



<b>A</b>	60 mm
<b>B</b>	100 mm
<b>C</b>	100 mm
<b>D</b>	200 mm
<b>E</b>	200 mm
<b>F</b>	200 mm
<b>G</b>	860 mm
<b>H</b>	160 mm
<b>Lo</b>	55 mm
<b>M</b>	70 mm
<b>No</b>	225 mm

\*YAK 1815H and 1820H only.



www.jakjacks.com.au

E: sales@abdexhydraulics.com.au