

CMC

EXTRA FLAT CYLINDERS SPRING RETURN

FEATURES

The **CMC** range of cylinders have grooved end rods to improve the load grip, models over 20 tonne also have two threaded holes in the end rod to facilitate the screwing of the tilt saddle.

All models have two holes which allows the cylinder to be bolted down onto a work surface; their flat sides also allow them to be used horizontally.

Models over 5 tonne are fitted with a wiper seal and from 75 tonne upwards they are fitted with a removeable carrying handle.

The **CMC5N6** model is supplied with a **K71F** coupler (1/4" - 18 NPT connection).

ACCESSORIES (p. 29)

- **ZTT tilt saddle** reduces the effects of any possible off-centred load.



OPERATIONAL AREAS

These extra compact lightweight cylinders are the ideal solution to operate in the narrowest working areas. They are used for the lifting of machineries, transformers and bridge sections while in the ship building industry can be used to raise engines into position and remove propellers.

STANDARD

- Tilt saddle mounting **holes**.



It's important to drop the pressure inside the cylinder before disconnecting the quick coupler to avoid problems if re-inserting or lowering the load. In case some pressure persists it is possible to use the apposite tool **KST38** in order to lower the pressure in the couplers.

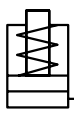


For the lifting of machineries from a very low position it can be also used our product **UJ**.



Thanks to their dimensions **PS** and **PNP** hand pumps are recommended to operate with these cylinders.

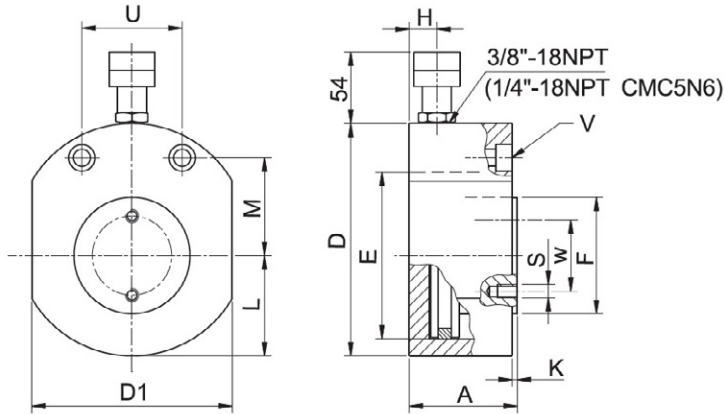




● FORCE	5 - 150 t
● STROKE	6 - 15 mm
● MAX WORKING PRESSURE	700 bar

CMC

EXTRA FLAT CYLINDERS SPRING RETURN

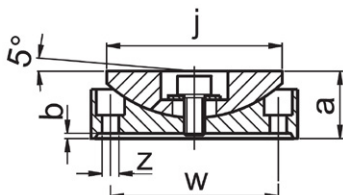


SELECTION CHART

PUSHING FORCE	STROKE	EFFECTIVE AREA	OIL VOLUME	MODEL	CLOSED HEIGHT	Ø EXTERNAL	EXTERNAL DIMENSION	Ø PISTON	Ø ROD	COUPLER HEIGHT	ROD PROJECTION	DISTANCE FROM ROD AXIS TO THE EXTERNAL Ø	DISTANCE FROM THE MOUNTING HOLES TO THE ROD AXIS	DISTANCE BETWEEN THE MOUNTING HOLES CENTRES	THROUGH HOLES FOR ISO - 4762 SCREWS	PCD MOUNTING HOLES FOR THE TILT SADDLE	MOUNTING HOLES FOR THE TILT SADDLE	WEIGHT
					A mm	D mm	D1 mm	E mm	F mm	H mm	K mm	L mm	M mm	U mm	V mm	W mm	S mm	kg
5 49,5	6	7.1	4	CMC5N6 **	33	59	41	30	24	16	1	20.5	22.5	28.5	M5	-	-	0.6
	15		11	CMC5N15	42													19
10 111	10	15.9	16	CMC10N10	43	78	58	45	35	19	1	29	34	37	M6	-	-	1.6
20 198	10	28.3	28	CMC20N10	52	100	76	60	45	19	1	39	40	50	M10	-	-	2.8
30 309	10	44.1	44	CMC30N10	59	115	95	75	55	19	1	48	44	52	M10	44	2xM5	4.2
50 496	15	70.9	106	CMC50N15	68	143	120	95	80	19	1	60	54	67	M12	65	2xM6	6.9
75 727	15	103.9	156	CMC75N15	80	166	142	115	100	19	2	71	67	76	M12	65	2xM6	12
100 929	15	132.7	199	CMC100N15	86	178	160	130	100	20	2	80	75	76	M12	65	2xM6	14.5
150 1407	15	201	302	CMC150N15	100	217	194	160	120	23	2	97	83	117	M12	80	2xM6	24.5

* Nominal value, see kN for the exact force. / ** CMC5N6 with K71F (1/4" NPT).

ACCESSORIES ZTT TILT SADDLES



MODEL	For use with	a	b	j	z	w	kg
ZTT30	CMC30N10	19	1	53	5.5	44	0.3
ZTT50	CMC50N15	25	1	68	6.5	65	0.9
ZTT100	CMC75N15 / CMC100N15	34	2	88		1.7	
ZTT150	CMC150N15	45	3	118	80	3.4	