

# CML

## SPRING RETURN ALUMINIUM CYLINDERS

### FEATURES

Five models of this type of cylinder are manufactured in a high resistance aluminium cylinder body (and end of stroke nut for 100 tonne) with a protective treatment, to increase the resistance to corrosion. Wiper seals are fitted to prevent the penetration of dirt.

It's recommended to carefully avoid, despite the protective treatment, the eventual flow of water which, due to the galvanic currents, can deteriorate the surface. Given the sensitivity of the material to work stress we suggest a maximum use of 5000 work cycles.

All models are supplied with interchangeable grooved pushing saddle and have two lateral threaded holes to enable the mounting of a tilt saddle to reduce the effects of any side loading.

They are also fitted with a removable carry handle.

### OPERATIONAL AREAS

Because of their extremely low weight and dimensions these cylinders are particularly suitable for use in applications where lightness and ease of handling are paramount.

### ACCESSORIES

- **Separate ZTT tilt saddle** (p. 41)  
Reduces the effects of possible off-centre loads.



### STANDARD

#### Pushing saddle

Prevents any risk of rod deformation.



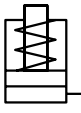
It's important to drop the pressure inside the cylinder before disconnecting the quick coupler to avoid problems if re-inserting or lowering the load. In case some pressure persists it is possible to use the apposite tool **KST38**.



The **CML** cylinders accompanied with the **PN** pumps form a handy, simple and efficient set.



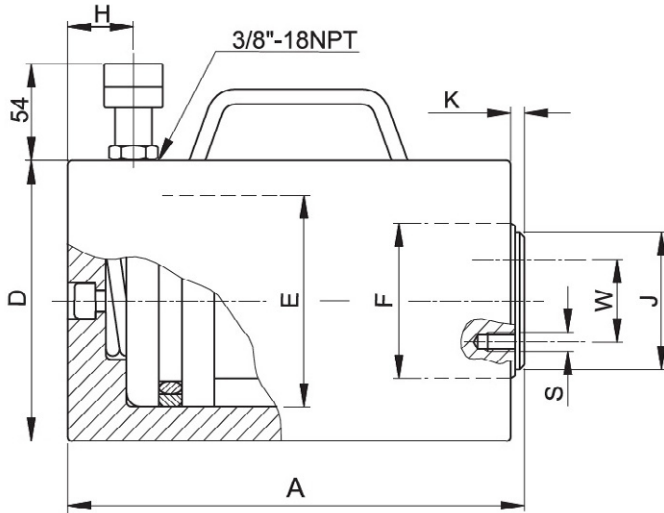
Follow EUROPRESS safety instructions see useful pages (p.176).



● FORCE	50 - 100 t
● STROKE	50 - 150 mm
● MAX WORKING PRESSURE	700 bar

# CML

## SPRING RETURN ALUMINIUM CYLINDERS



HYDRAULIC CYLINDERS

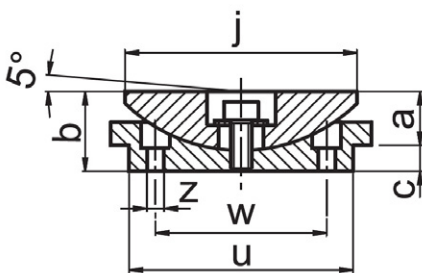
### SELECTION CHART

Cylinder with non standard force and stroke can be supplied upon request.

PUSHING FORCE	STROKE	EFFECTIVE AREA	OIL VOLUME	MODEL	CLOSED HEIGHT	Ø EXTERNAL	Ø PISTON	Ø ROD	COUPLER HEIGHT	Ø HOLLOW SADDLE	ROD PROJECTION	PCD MOUNTING HOLES FOR THE TILT SADDLE	MOUNTING HOLES FOR THE TILT SADDLE	WEIGHT
					A mm	D mm	E mm	F mm	H mm	J mm	K mm	W mm	S mm	kg
50 496	50	70.9	354	CML50N50	158	130	95	80	25	65	4	45	2xM5	8.8
	100		709	CML50N100	208									10.8
	150		1063	CML50N150	258									12.7
100 929	50	132.7	664	CML100N50	196	178	130	100	25	85	4	65	2xM6	19.4
	100		1327	CML100N100	246									22.6
	150		1991	CML100N150	296									25.8

\* Nominal value, see kN for the exact force.

### ACCESSORIES ZTT TILT SADDLES



MODEL	For use with	a	b	c	j	u	z	w	kg
ZTT51	CML50N ###	18	26	8	68	65	5.5	45	0.8
ZTT101	CML100N ###	22	32	10	88	85	6.5	65	1.6