

CMP

LOW PROFILE CYLINDERS WITH SHORT STROKE SPRING RETURN

FEATURES

Their main feature is their long stroke compared to their shortness, the **CMP** cylinders represent the widest range of low profile spring return cylinders.

All cylinders have a grooved rod top and two threaded holes for the mounting of the tilt saddle.

Holes at the bottom of the cylinder are available as an extra and the wiper avoids the penetration of dirt.

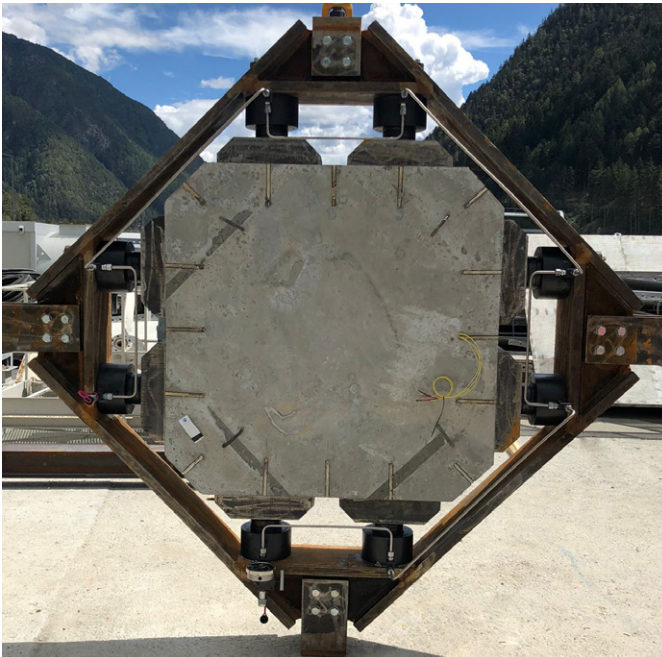
OPERATIONAL AREAS

The small dimensions and the complete treatment against corrosion makes these cylinders ideal for lifting, levelling, supporting and pressing operations in restricted working areas and/or harsh environments.

General maintenance work, industrial assembly and construction are among the most common applications for this type of cylinder.

ACCESSORIES

- **Separate ZTT tilt saddle** (p. 43)
Reduces the effects of possible off-centred loads.



STANDARD

- Tilt saddle mounting **holes**.

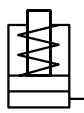
OPTIONS

- **F version**
Cylinder with base mounting holes for fixing purposes.



It's important to drop the pressure inside the cylinder before disconnecting the quick coupler to avoid problems if re-inserting or lowering the load. In case some pressure persists it is possible to use the apposite tool **KST38**.

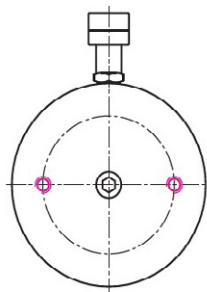
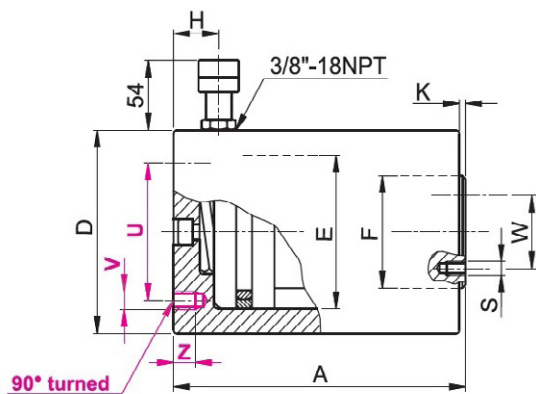
Follow EUROPRESS safety instructions see useful pages (p. 176).



● FORCE	10 - 100 t
● STROKE	25 - 50 mm
● MAX WORKING PRESSURE	700 bar

CMP

LOW PROFILE CYLINDERS, WITH SHORT STROKE SPRING RETURN

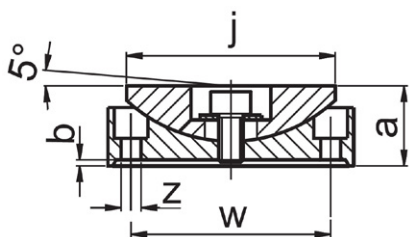


SELECTION CHART

PUSHING FORCE	STROKE	EFFECTIVE AREA	OIL VOLUME	MODEL	CLOSED HEIGHT	Ø EXTERNAL	Ø PISTON	Ø ROD	COUPLER HEIGHT	ROD PROJECTION	PCD MOUNTING HOLES	MOUNTING HOLES DEPTH	COLLAR THREAD	MOUNTING HOLES FOR THE TILT SADDLE	WEIGHT
10 111	25	15.9	40	CMP10N25	72	75	45	35	19	1	25	2xM8 6	24	2xM5	2.5
	50		80	CMP10N50	97										3.2
20 198	25	28.3	71	CMP20N25	75	88	60	45	19	1	60	2xM10 10	34	2xM5	3.4
	50		141	CMP20N50	100										4.2
30 309	25	44.1	110	CMP30N25	86	102	75	55	19	1	65	2xM10 13	44	2xM5	5
	50		221	CMP30N50	111										6.1
50 496	25	70.9	177	CMP50N25	97	127	95	80	22	1	95	2xM12 15	65	2xM6	7.6
	50		354	CMP50N50	122										9.1
100 929	25	132.7	332	CMP100N25	116	175	130	100	22	2	140	2xM12 17	65	2xM6	17.6
	50		664	CMP100N50	141										20.5

* Nominal value, see kN for the exact force.

ACCESSORIES ZTT TILT SADDLES



MODEL	For use with	a	b	j	z	w	kg
ZTT10	CMP10N ###	16	1	34	5.5	24	0.1
ZTT20	CMP20N ###	18		43		34	0.2
ZTT30	CMP30N ###	19		53		44	0.3
ZTT50	CMP50N ###	25	2	68	6.5	65	0.9
ZTT100	CMP100N ###	34		88			1.7

MODEL CODING

CMP	10	N	###	#
Series	Pushing Force in t	N = standard	Stroke in mm	F = with base mounting holes