

# MD

## MIDI HYDRAULIC POWER PACKS 700 / 1000 / 1500 bar

### FEATURES - SERIES 700 bar

These two-stage Hydraulic Power Packs are particularly light and compact with excellent technical features.

A large range of manual and electric controlled valves, allows them to be used with single and double acting cylinders

#### All models are equipped with:

- Single phase electric motor 230 V - 50 Hz / 0,75 kW, 2800 rpm.
- Two-stage piston pump.
- Manual or electric 3 or 4-ways valves with or without pilot check.
- Relief valve.
- Plastic reservoir.
- Plastic frame with carrying handle (excluding H version).
- Protective cage (only H version)  
dim. AxBxH - 400x250x420 mm.
- Oil level gauge.
- Electric cable 5 m.
- Remote control 3 m (for electric valves).

### FEATURES - SERIES 1000 / 1500 bar

Same characteristics of the 700 bar series aside from:

- Manual or electric 3 ways - 2 positions valve.
- Pressure regulation valve.
- G16 Gauge.

These can be supplied if requested with voltage motor, air operated motor or with different capacity reservoir.

### OPERATIONAL AREAS

**700 bar series:** considering that are very easy to handle they are ideal for medium sized tools. Particularly suitable to be used with cutters, small presses, pipe bending machines and spreaders.

**1000 bar series:** suitable to be used with tensioner mod. UTN and UTH (p. 151).

**1500 bar series:** suitable to be used with tensioner mod. UTV (p. 153).

### OPTIONS - SERIES 700 bar

- **R version** 3 m remote control useful to activate the motor. Available in power pack with manual valve series **MDM##**.
- **H version** power pack with high flow pump:  
1° stage 6,0 l/min - 2° stage 0,6 l/min - motor 1,1 kW.
- **J version** with pressure regulation valve.

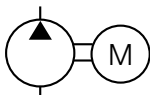
### OPTIONS - SERIES 1000 / 1500 bar

**R version** 3 m remote control useful to operate the motor.

### ACCESSORIES

- **RP52** gauge adaptor for G106 gauge. (700 bar versions only).



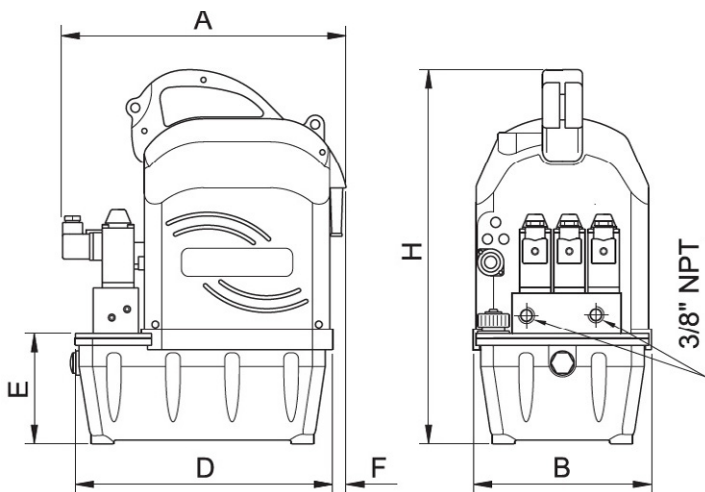


• RESERVOIR CAPACITY	2,6 l
• DELIVERY AT 65 BAR	2,4 l/min - 6,0 l/min
• DELIVERY AT 700 BAR	0,4 l/min - 0,6 l/min
• POWER RATING	0,75 - 1,1 kW
• MAX PRESSURE	700 bar

# MD

## MIDI HYDRAULIC POWER PACKS / 700 bar

HYDRAULIC PUMPS



### SELECTION CHART

OIL DELIVERY		PRESSURE RATING		RESERVOIR CAPACITY	USABLE OIL VOLUME	MODEL	DIMENSIONS MM						WEIGHT
1°Stage	2°Stage	1°Stage	2°Stage				A	B	D	E	F	H	
l/min	l/min	bar	bar	litres	litres								
2.4	0.4	65	700	2.6	2.4	MDM21	329	197	287	119	15	406	16
						MDM31							16.3
						MDM41	366						16.3
						MDM42							16.5
						MDE21R							16.3
						MDE22R	316						16.3
MDE41R		18.5											

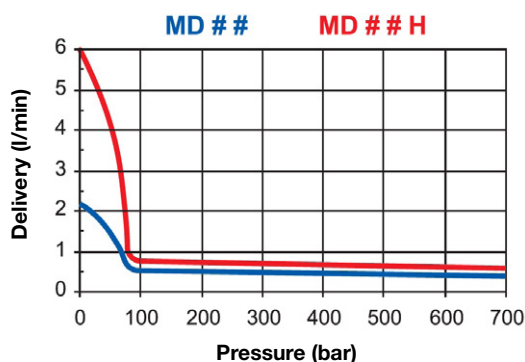
### FUNCTION CHART

MODEL	FOR USE WITH	VALVE FUNCTION	SYMBOL
MDM21	Single acting	Advance - Return	
MDM31		Advance - Hold - Return	
MDM41	Double acting	Advance - Hold - Return	
MDM42		Advance - Hold with pilot check - Return	
MDE21R	Single acting	Advance - Return	
MDE22R		Advance - Hold - Return	
MDE41R	Double acting	Advance - Hold - Return	

### MODEL CODING / 700 bar SERIES

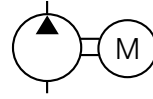
MD	M21	R	#	J
Series	Valve type	Remote control	Standard pump H high flow pump	Pressure regulation valve

### DELIVERY DIAGRAM / 700 bar SERIES

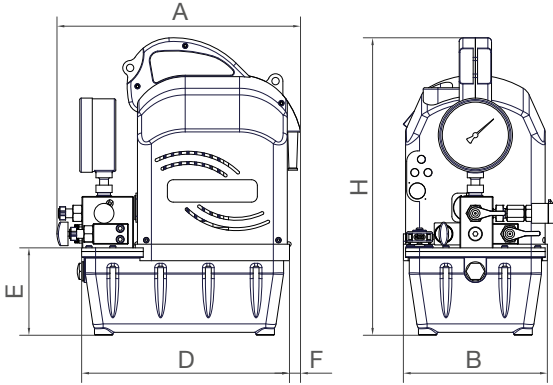


# MD

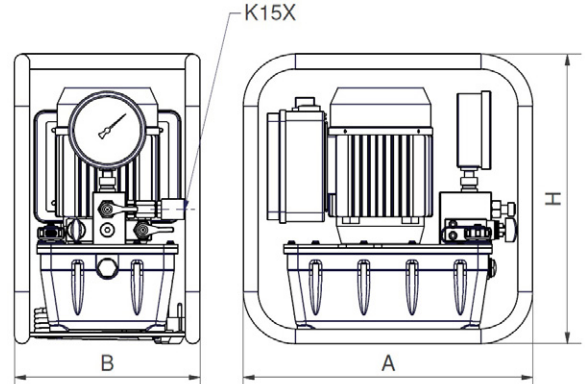
## MIDI HYDRAULIC POWER PACKS 1000 / 1500 bar



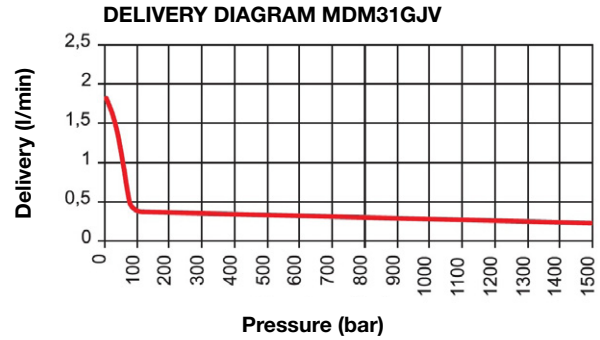
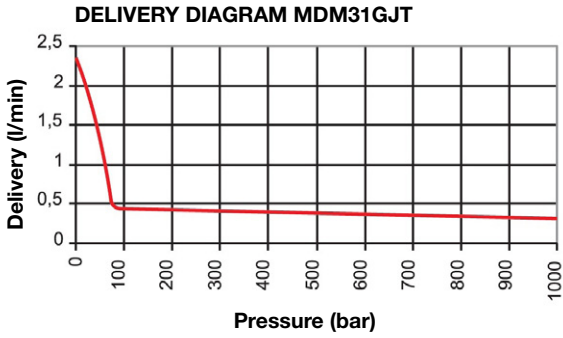
• RESERVOIR CAPACITY	2,6 l
• DELIVERY AT MAX PRESSURE	0,2 - 0,3 l/min
• POWER RATING	0,75 kW
• MAX PRESSURE	1000 - 1500 bar



**MDM31GJT**



**MDM31GJV**



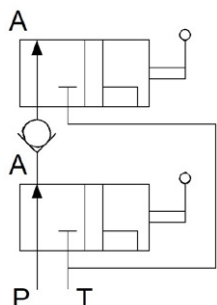
### SELECTION CHART

OIL DELIVERY		PRESSURE RATING		RESERVOIR CAPACITY	USABLE OIL VOLUME	MODEL	DIMENSIONS MM					WEIGHT	
1°Stage	2°Stage	1°Stage	2°Stage				A	B	D	E	F		H
l/min	l/min	bar	bar	litres	litres								
2.3	0.3	65	1000	2.6	2.4	<b>MDM31GJT</b>	329	197	287	119	15	406	16.5
1.8	0.2		1500			<b>MDM31GJV</b>	390	250	-	-	-	390	24.5

### FUNCTION CHART

MODEL	MDM31GJT	MDM31GJV
Valve function	Advance - Return	

SYMBOL



### MODEL CODING / 1000 / 1500 bar SERIES

MD	M21	G	J	R	V
Series	Valve type	Gauge G16	Pressure regulation valve	Remote control	T = max. w. pressure 1000 bar V = max. w. pressure 1500 bar

## 700 bar HYDRAULIC POWER PACKS FOR TORQUE WRENCHES OF SMALL AND MEDIUM CAPACITY

For big capacity torque wrenches check models **MEE10WR/4**, **MME10WR/4** and **MPE10WR/4**

### FEATURES - 700 bar SERIES

Specifically designed for torque wrenches, these power packs combine maximum operating efficiency with a compact and lightweight design. Thanks to their compact dimensions and weight, they are easy to carry and are supplied with a handle or a protective frame.

#### All models are equipped with:

- 1/4" NPT male coupler on advance line and female on return line equipped with dust caps.
- Two-stage piston pump.
- Electric or pneumatic 4 ways 2 position valve.
- Pressure regulating valve.
- Pressure gauge.
- Relief valve.
- Plastic tank.
- Plastic case with integrated handle (mod. **MDWR**).
- Protection cage (mod. **MDWRH**, **MDWRP** and **MDWRHE**).
- Oil level gauge.
- 3 m. remote control.
- 5 m. electric cable.
- Heat exchanger (mod. **MDWRHE**).

#### 4 different models are available:

- **MDWR** with 2,4/0,4 l/min pump and electric single phase 0,75 kW motor.
- **MDWRH** with 6/0,6 l/min pump and electric single phase 1,1 kW motor.
- **MDWRP** with 6/0,6 l/min pump and air 1,5 kW motor.
- **MDWRHE** with 6/0,6 l/min pump and electric single phase 1,1 kW motor and heat exchanger.

#### OPERATIONAL AREAS

Ideal if combined with torque wrenches.



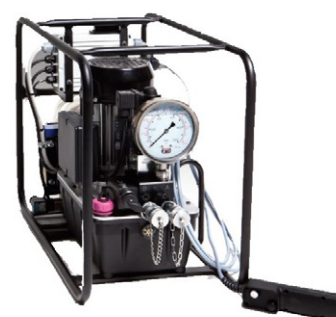
Power packs with different voltage motors and 4 exits can be supplied upon request (p. 148).



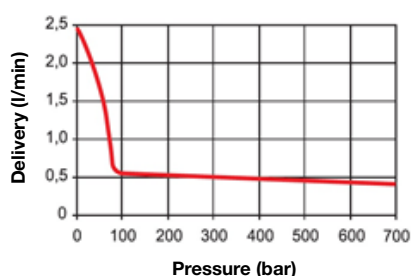
**FLEXIBLE HOSES:** Two hoses are necessary to connect the torque wrench, each of them supplied with one male and one female coupler at the ends **STQ##FM**.



Power packs with different voltage motors and 4 exits can be supplied upon request.



DELIVERY DIAGRAM MDWR



DELIVERY DIAGRAM MDWRP / MDWRHE

