

R

MANIFOLDS / FITTINGS

1000 / 2000 / 3000 bar

• MAX WORKING PRESSURE	1000 bar
• APPLICATIONS	3 - 9

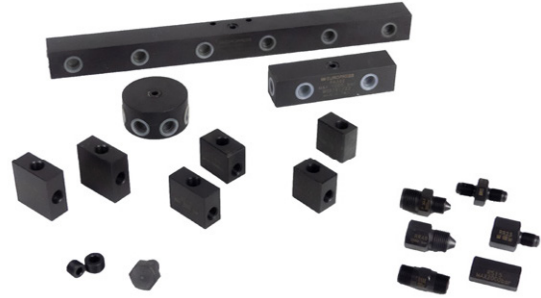
FEATURES

Manifolds.

They are available in various sizes with axial or radial outlets, they are 1/4" NPT threaded for the insertion of the pressure gauge.

Fittings.

The fittings range at 1000 bar guarantees a 4 safety factor if used at 700 bar w.p., and a 2,8 safety factor if used at 1000 bar w.p.



MANIFOLDS

Type	MODEL	Image	N° usage	A	B
				mm	mm
Multi level manifold	RB386		6	-	-
Single level manifold	RM387		7	260	110
	RB389		9	400	180
Radial manifold	RK383		3	45	-
	RK385		5	55	-
	RK387		7	65	-