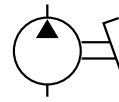


PF

LIGHTWEIGHT ALLOY FOOT PUMPS / 700 bar



• RESERVOIR CAPACITY	0,24 - 0,5 l
• OIL DELIVERY PER STROKE IN HP	2,2 cm ³
• MAX PRESSURE	700 bar

FEATURES

This lightweight aluminium pump is strong, simple to use and easy to maintain. Available in single-stage and double-stage versions to reduce approaching times.

It is equipped with:

- Externally adjustable relief valve.
- Steel base plate with antislip pads which can be removed if the pump is mounted onto a support structure.
- 1/4" NPT gauge port for direct installation of a pressure gauge on the pump head.

OPERATIONAL AREAS

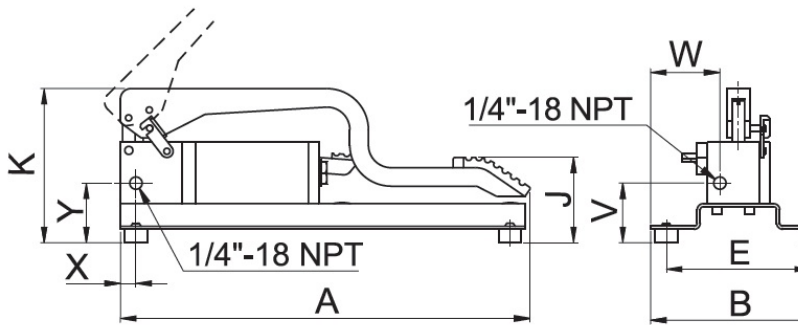
This pump is used with small tools for folding, drilling and pressing of pipes and metal sheets. They are not suitable for lifting and lowering operations since the discharge pedal doesn't have the possibility to control and modify the oil flux. This pump is recommended if the operator needs to keep his hands free.

OPTIONS

- **G version**, pump with pressure gauge **G106L** directly mounted on pump head (**PF120G**).

STANDARD

- 1/4" NPT gauge for Direct fitting of the pressure gauge on the pump head.



PRESSURE 1° STAGE	PRESSURE 2° STAGE	OIL DELIVERY 1° STAGE	OIL DELIVERY 2° STAGE	EFFORT ON PEDAL	FOR USE WITH	RESERVOIR CAPACITY	USABLE OIL VOLUME	MODEL	DIMENSIONS MM							WEIGHT	
									A	B	J	K	V	X	Y		W
bar	bar	cm ³	cm ³	N		litres	litres		A	B	J	K	V	X	Y	W	kg
-	700	-	2.2	490	Single acting	0.24	0.19	PF120	400	200	56-350	155	56	15	56	83	3.5
20		10.3		560		0.5	0.4	PF150				175				75	4.5