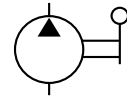


PP

HAND PUMPS FOR DIVERSIFIED APPLICATIONS 700 / 1400 bar



• OIL DELIVERY PER STROKE IN HP	2,1 - 4,5 cm ³
• MAX PRESSURE	700 - 1400 bar

FEATURES

These hand pumps are single-stage, tankless, lightweight and are easy to handle (their weight is less than 5 kg for the standard version and 6 kg for the INOX version).

All models are equipped with:

- 490 mm removable activation handle, used to turn the bypass valve on through the front connection.
- Fixing holes on the base.
- 3/8"-18 NPT side ports for oil inlet and outlet.
- All standard pump components, both internal and external, undergo the EUROPRESS exclusive thermo-chemical treatment, named **Nitreg-ONC®**, which makes steel exceptionally hard and resistant to corrosion and mechanical wear.

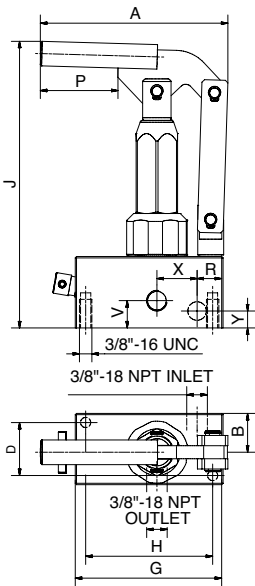
OPERATIONAL AREAS

- These types of pumps are particularly useful if used with small assembly room applications, and if installed either on machines or in circuits already equipped with their own reservoir. We advise to action the pump with the flooded inlet.

The **PP113** pump is also available in stainless steel for usage with water, and with different pump heads to be used at pressures lower than 700 bar (available on request).



Choosing a in-line valve PP pumps can be used also in **double-acting** applications.



SELECTION CHART

MAX PRESSURE	OIL DELIVERY PER STROKE	HANDLE EFFORT	TO BE USE WITH	FOR USE WITH CYLINDERS	MODEL	DIMENSIONS MM												WEIGHT	
						A	B	D	G	H	J	K	M	P	R	V	X		Y
bar	cm ³	N				A	B	D	G	H	J	K	M	P	R	V	X	Y	kg
1400	2.1	649	Oil	Single or double acting cylinders	PP109	145	30	41	114	98	219	55	55	60	20	21	31	13	4.8
700	4.5	677	Oil	Single or double acting cylinders	PP113	145	30	41	114	98	219	55	55	60	20	21	31	13	4.8
700	4.5	677	water	Single or double acting cylinders	PP113SS	145	30	41	114	98	219	60	60	60	20	21	31	13	5.6