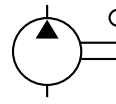


PV

STEEL HAND PUMPS WITH LARGE OIL DELIVERY 700 bar



• RESERVOIR CAPACITY	9,3 - 19,4 l
• OIL DELIVERY PER STROKE IN HP	4,8 cm ³
• MAX PRESSURE	700 bar

FEATURES

These pumps are two-stage hand pumps with an automatic switch from the 1st to the 2nd stage. A moderate effort on the handle is required to reach the maximum working pressure.

All models are equipped with:

- Relief valve.
- Carry handle.
- 1/2" BSP connection for pressure gauge.

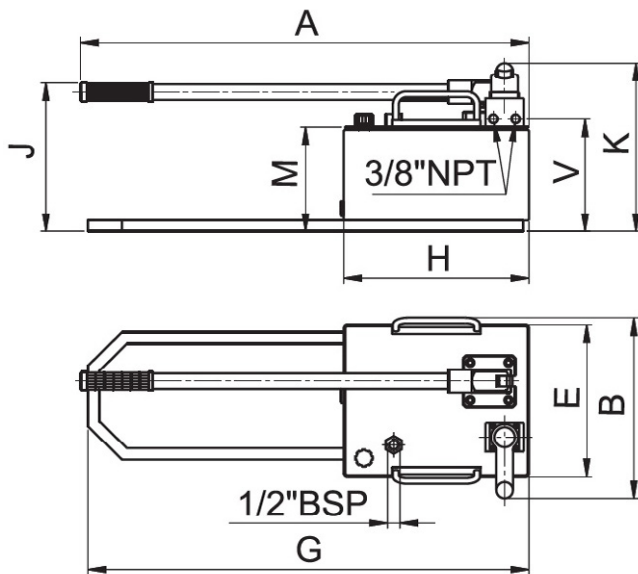
Available in 10 or 20 litre reservoirs and 3-way, 4-way and 4-way with control check valves.

OPERATIONAL AREAS

These steel hand pumps are ideal when you need a more affordable and handier pump compared to electric or pneumatic power packs while also having a larger reservoir capacity compared to **PN** hand pumps.

STANDARD

- **G version** pump with gauge **G10 (PV # G)**.



SELECTION CHART

PRESSURE 1ST STAGE	PRESSURE 2ND STAGE	OIL DELIVERY FOR STROKE 1 ST STAGE	OIL DELIVERY FOR STROKE 2ND STAGE	HANDLE EFFORT	FOR USE WITH CYLINDERS	RESERVOIR CAPACITY	USABLE OIL VOLUME	MODEL	DIMENSIONS MM								WEIGHT WITHOUT OIL	WEIGHT WITH OIL	
bar	bar	cm³	cm³	N		litres	litres		A	B	E	G	H	J	K	M	V	kg	kg
20	700	125	4.8	450	Single acting	9.3	7.7	PV1810	763	261	245	750	315	257	290	180	194	20.9	29
						19.4	16	PV1820				-	650	245	278	168	182	23.1	40
					Double acting	9.3	7.7	PV2810				750	315	257	290	180	194	20.9	29
						19.4	16	PV2820				-	650	245	278	168	182	23.1	40
					Double acting with controlled check valve	9.3	7.7	PV4810		313		750	315	257	290	180	194	20.9	29
						19.4	16	PV4820				-	650	245	278	168	182	23.1	40