

# PRESSURE GAUGES AND GAUGE ADAPTORS

## 700 / 1000 / 3000 / 4000 bar

• MAX WORKING PRESSURE	1000 - 4000 bar
• DIAL DIAMETER	63 - 100 mm
• ACCURACY OF FULL SCALE	1% - 1,6%
• SCALE	bar - bar/kN

### FEATURES

#### PRESSURE GAUGES

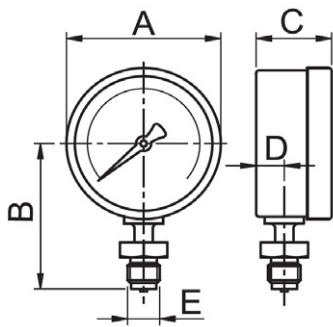
They are available with 63 or 100 mm diameter dial with bar and **PSI**. The 1000 bar gauges are glycerine filled while the 1600, 3000, 4000 bar are dry. The **G106L** pressure gauge has a 1/4" NPT screw connection for direct insertion on the left side of the pump head.

The model **G10** exists also in the double scale version, bar and Kn, to be used up to 700 bar, and differentiated for cylinder with hollow piston (**G10F##**) and for cylinder with normal piston (**G10S##**).

#### GAUGE ADAPTORS

Manufactured in steel, they are available in five versions to suit the gauge diameter and distance from the equipment.

### SELECTION CHART FOR DOUBLE SCALE GAUGES



MODEL	Scale bar	Scale kN	For cylinders	Dim
G10F1020	700	0-121 / 0-225	CMF 10/20 ton	See G10
G10F3060		0-327 / 0-578	CMF/COF 30/60 ton	
G10S1020		0-109 / 0-194	CGS/CMC/CMI/CMP/COI 10 ton CGS/CMC/CMP 20 ton	
G10S2530		0-228 / 0-303	CMI 25 ton CGG/CGS/CMC/CMI/CMP/COI 30 ton	
G10S50100		0-486 / 0-911	CGG/CGS/CMC/CMI/CML/CMP/COI/COS 50/100 ton	



### PRESSURE GAUGE SELECTION CHART 700 / 1000 bar

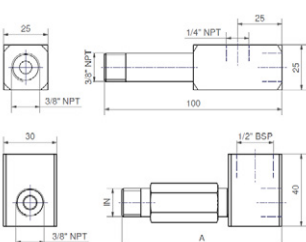
Digital gauges can be supplied upon request. Adapters are available for 1000, 1600, 3000 bar gauges.

Max working pressure	Full scale	Dial diameter	Precision class DIN16005	Scale indexing	Thread	MODEL	Dimensions mm				Weight
							A	B	C	D	
bar	bar	mm	%	bar	E						kg
700	1000	63	1.6	50	1/4" NPT	G106L	68	54	32	13	0.2
1000	1000	100	1	20	1/2" BSP Swivelling	G10	101	98	49	15.5	0.8

### PRESSURE GAUGE SELECTION CHART 1600 / 3000 / 4000 bar

Max working pressure	Full scale	Dial diameter	Precision class DIN16005	Scale indexing	Thread	MODEL	Dimensions mm				Weight
							A	B	C	D	
bar	bar	mm	%	bar	E						kg
1600	1600	100	1	50	1/2" BSP * Swivelling	G16	101	98	49	15.5	0.6
3000	3000				1/2" BSP Swivelling	G30					
4000	4000				M16x1,5 female	G40					

### PRESSURE CHART FOR 1000 bar GAUGE ADAPTORS TO BE MOUNTED IN-LINE



MODEL	Max working pressure	Gauge connection	in/out connection	A dimension	Weight
	bar			mm	kg
RP52	1000	1/4" NPT	3/8" NPT	100	0.4
RP26			IN 1/4" NPT / OUT 3/8" NPT	62	0.26
RP50		1/2" BSP	3/8" NPT	60	0.28
RP501				90	0.33
RP502				140	0.42