

# MOBILE FOLDING FLOOR CRANE

## FEATURES

**UGC** floor cranes are built with polyamide pivoting wheels and are completely foldable, this makes them easy to maneuver, even in tight spaces.

The extendible jib is equipped with an handle to facilitate positioning.

it is fitted with 3 opening positions, each one with its lifting force listed.

The hydraulic unit can rotate 135° to ease the activation by the operator.

The cylinder inside has a safety valve and a stroke limitation device.

## OPERATIONAL AREAS

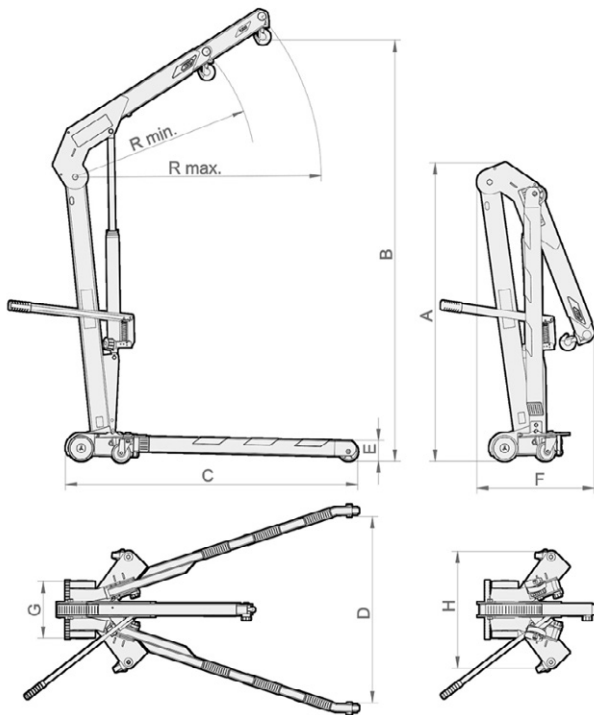
These cranes are used in a wide variety of applications including, machinery and engine removal, and machine shops. **UGC** cranes are essential for lifting, moving and positioning of motors and engines and where space is limited.



Products subject to periodic variations. for more detailed information please call the sales department or visit our website.



Always check that the pin is fully secured in the correct locating hole, depending on the jib position and the load to be lifted.



## SELECTION CHART

FORCE	MODEL	DIMENSIONS MM									WEIGHT
		A	B	C	D	E	R min.	R max.	F	G	
650	<b>UGC5</b>	1580	2200	1450	830	112	960	1300	615	300	80
1000	<b>UGC10</b>	1580	2200	1525	970	112	960	1300	615	300	81
2000	<b>UGC20</b>	1740	2460	1830	1100	150	1200	1610	680	300	145