

• FORCE	1054 - 6498 kN
• THROUGH HOLE	100 - 400 mm
• MAX WORKING PRESSURE	800 bar

UHL SMOOTH BORE HYDRAULIC NUTS



FEATURES AND OPERATIONAL AREAS

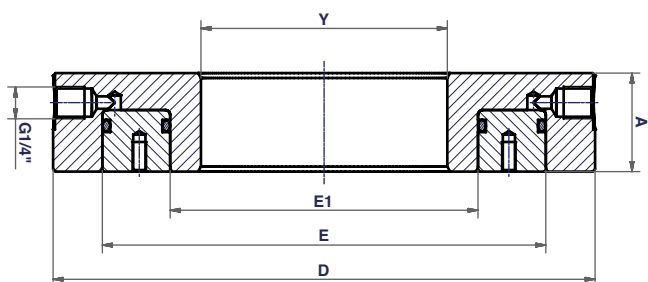
The UHL smooth bore Hydraulic Nuts are used in heavy industry and shipyards for mounting bearings, gears or propellers on tapered seatings. They can be used with threaded shafts, on which a reaction nut is installed behind the nut, or with non protruding shafts fitted with axial threaded holes to which a reaction plate can be fitted. Due to the higher force generated if compared to the threaded version, this design results much more versatile and generically applicable to many cases. Built to withstand pressure up to 800 bar, the hydraulic nuts are able to supply all the force necessary even for the most difficult cases. The hydraulic nuts are supplied with two ports on the sides only, one fitted with a K11M coupler, while the other port is plugged and can be used to connect a pressure transducer or a pressure gauge.

The pumps dedicated to operate the hydraulic nuts are fitted with the fittings necessary for an optimal connection.

- Wide dimensional range from 100 mm to 400 mm as standard.
- The smooth hole, calibrated H7, allows an easy installation on the shaft, not requiring to screw the nut.
- The models over 30 kg of weight are provided with threaded holes for eyebolts.
- Particular or larger models are available on request.



Bottom surface must be in contact with a solid, flat and indeformable ground.



SELECTION CHART

PUSHING FORCE	WORKING PRESSURE	PUSHING AREA	STROKE	OIL VOLUME	MODEL	CLOSED HEIGHT	Ø EXTERNAL	Ø EXTERNAL PISTON	Ø INTERNAL PISTON	Ø THROUGH HOLE	WEIGHT
						kN	bar	cm ²	mm	cm ³	A
1054	800	132	10	132	UHL100	40	220	180	125	100	9,5
1100	800	137	10	137	UHL125	40	245	200	150	125	9,8
1173	800	147	10	147	UHL150	40	270	226	180	150	12,5
1286	800	161	11	177	UHL175	45	305	250	205	175	17
1602	800	200	12	240	UHL200	50	330	280	230	200	21
2070	800	259	12	310	UHL225	50	365	313	255	225	23
2553	800	319	12	383	UHL250	50	390	345	280	250	28
3228	800	403	12	484	UHL275	50	430	380	305	275	34
3511	800	439	13	570	UHL300	55	470	410	335	300	44
4021	800	503	13	653	UHL325	55	500	440	360	325	49
4863	800	608	13	790	UHL350	55	540	475	385	350	57
5781	800	723	13	939	UHL375	55	575	510	410	375	65
6498	800	812	15	1218	UHL400	60	620	545	440	400	83