

UHM

HYDRAULIC THREADED NUT

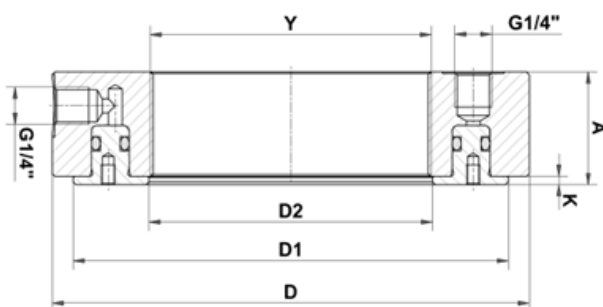


• FORCE	183 - 1583 kN
• THROUGH HOLE	M50 - Tr500
• MAX WORKING PRESSURE	300 - 600 bar

FEATURES AND OPERATIONAL AREAS

The **UHM** Hydraulic Nuts are used for mounting and dismantling bearings on tapered seating, directly or through conical adapter or withdrawal sleeve. Their design is aimed at reducing the operation time and make it easier. Built to withstand pressure up to 800 bar, the hydraulic nuts are able to supply all the force necessary also for the most difficult cases. The hydraulic nuts are supplied with a **K11M** coupler at one port, while the other ports are plugged. The pumps dedicated to operate the hydraulic nuts are fitted with the fittings necessary for an optimal connection.

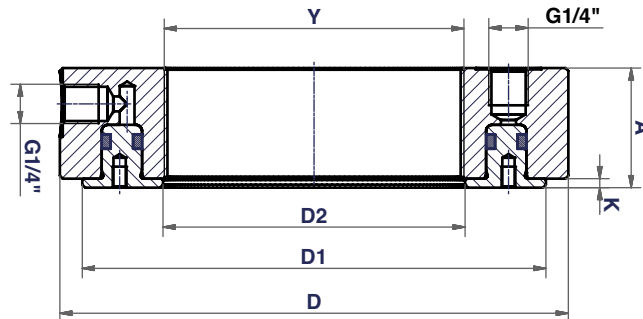
- Wide dimensional range from 50 mm to 500 mm as standard.
- Available in **UHW version with Imperial thread** from 1,967" to 19,682".
- The coupling can be fitted to any of the ports available according to the space constraints.
- The installation of the nut on the thread is facilitated by the holes provided for the insertion of tommy bars.
- The models over 30 kg of weight are provided with threaded holes for eyebolts.
- Particular or larger models are available on request.



SELECTION CHART

PUSHING FORCE kN	WORKING PRESSURE bar	PUSHING AREA cm ²	STROKE mm	OIL VOLUME cm ³	MODEL	CLOSED HEIGHT	Ø EXTERNAL	Ø EXTERNAL PISTON	Ø INTERNAL PISTON	PISTON PROJECTION	THREAD	WEIGHT
						All dimensions (mm)						kg
						A	D	D1	D2	K	Y	
183	600	30	4	12	UHM50	40	110	98	51	2	M 50x1,5	2,6
188	600	31	4	13	UHM55	40	118	105	56	2	M 55x2	2,7
190	600	32	4	13	UHM60	40	125	112	61	2	M 60x2	2,8
213	600	35	4	14	UHM65	40	132	118	66	3	M 65x2	3,1
245	600	41	4	16	UHM70	40	140	123	71	3	M 70x2	3,3
274	600	46	4	18	UHM75	40	145	128	76	3	M 75x2	3,5
299	600	50	4	20	UHM80	40	150	133	81	3	M 80x2	3,7
301	600	50	4	20	UHM85	40	155	138	86	3	M 85x2	3,8
302	600	50	5	25	UHM90	40	160	143	91	3	M 90x2	4,1
314	600	52	5	26	UHM95	40	165	148	96	3	M 95x2	4,3



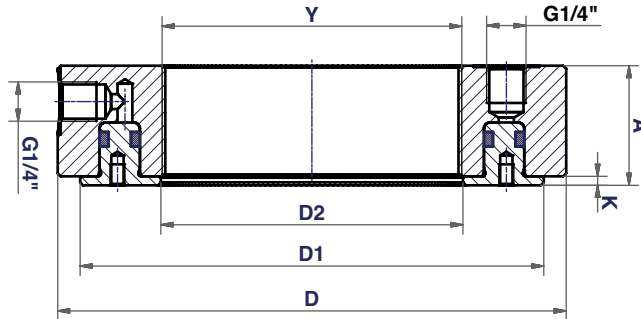


SELECTION CHART

PUSHING FORCE kN	WORKING PRESSURE bar	PUSHING AREA cm ²	STROKE mm	OIL VOLUME cm ³	MODEL	CLOSED HEIGHT	Ø EXTERNAL	Ø EXTERNAL PISTON	Ø INTERNAL PISTON	PISTON PROJECTION K	THREAD Y	WEIGHT kg
						All dimensions (mm)						
						A	D	D1	D2			
327	600	54	5	27	UHM100	40	170	155	101	3	M 100x2	4,5
340	600	57	5	28	UHM105	42	175	160	106	6	M 105x2	4,7
352	600	59	5	29	UHM110	42	180	165	111	6	M 110x2	5
365	600	61	5	30	UHM115	43	185	170	116	6	M 115x2	5,2
378	600	63	5	31	UHM120	43	190	175	121	6	M 120x2	5,4
391	600	65	5	33	UHM125	44	195	180	126	7	M 125x2	5,6
390	600	65	5	32	UHM130	44	200	185	131	7	M 130x2	5,8
399	600	67	5	33	UHM135	45	205	190	136	7	M 135x2	6
412	600	69	5	34	UHM140	45	210	196	141	7	M 140x2	6,2
424	600	71	5	35	UHM145	46	215	202	146	7	M 145x2	6,5
436	600	73	5	36	UHM150	46	220	207	151	7	M 150x2	6,7
486	600	81	5	40	UHM155	46	225	214	156	7	M 155x3	7
512	600	85	6	51	UHM160	47	235	220	161	7	M 160x3	7,7
560	600	93	6	56	UHM165	47	240	225	166	7	M 165x3	8,2
580	600	97	6	58	UHM170	48	245	232	171	7	M 170x3	8,6
608	600	101	6	61	UHM180	48	255	243	181	7	M 180x3	9,1
691	600	115	8	92	UHM190	50	270	255	191	8	M 190x3	10,5
759	600	127	8	101	UHM200	50	280	267	201	8	M 200x3	11,5
528	400	132	8	106	UHM205	51	290	272	207	8	Tr 205x4	12,3
538	400	135	9	121	UHM210	52	295	278	212	9	Tr 210x4	12,7
549	400	137	9	124	UHM215	53	300	283	217	9	Tr 215x4	13,2
577	400	144	9	130	UHM220	53	305	288	222	9	Tr 220x4	13,5
611	400	153	10	153	UHM225	54	315	296	227	9	Tr 225x4	15
643	400	161	10	161	UHM230	54	320	302	232	9	Tr 230x4	15,3
650	400	162	10	162	UHM235	54	325	307	237	9	Tr 235x4	15,5
659	400	165	10	165	UHM240	55	330	312	242	9	Tr 240x4	16,1
724	400	181	10	181	UHM250	56	345	325	252	10	Tr 250x4	18
749	400	187	11	206	UHM260	57	355	337	262	10	Tr 260x4	19
785	400	196	12	236	UHM270	58	370	348	272	10	Tr 270x4	21,1
817	400	204	12	245	UHM275	58	375	337	277	10	Tr 275x4	21,5
849	400	212	12	255	UHM280	59	380	342	282	10	Tr 280x4	22,3
875	400	219	13	284	UHM290	60	390	352	292	10	Tr 290x4	23,3
921	400	230	13	299	UHM295	60	400	362	297	10	Tr 295x4	25

UHM

HYDRAULIC THREADED NUT



SELECTION CHART

PUSHING FORCE	WORKING PRESSURE	PUSHING AREA	STROKE	OIL VOLUME	MODEL	CLOSED HEIGHT	Ø EXTERNAL	Ø EXTERNAL PISTON	Ø INTERNAL PISTON	PISTON PROJECTION	THREAD	WEIGHT
kN	bar	cm ²	mm	cm ³		A	D	D1	D2	K	Y	kg
955	400	239	13	310	UHM300	61	405	365	302	10	Tr 300x4	25,8
753	300	251	13	326	UHM310	62	415	375	312	10	Tr 310x5	27
763	300	254	13	331	UHM315	62	420	385	317	10	Tr 315x5	27,5
796	300	265	14	372	UHM320	63	430	405	322	10	Tr 320x5	29,9
811	300	270	14	379	UHM330	64	440	415	332	11	Tr 330x5	31
822	300	274	14	383	UHM335	64	445	420	337	11	Tr 335x5	32
850	300	283	14	397	UHM340	65	450	425	342	11	Tr 340x5	32,5
861	300	287	14	402	UHM345	65	455	430	347	11	Tr 345x5	33,5
918	300	306	14	429	UHM350	66	465	438	352	11	Tr 350x5	35
911	300	304	15	456	UHM355	67	470	445	357	11	Tr 355x5	36,5
941	300	314	15	470	UHM360	67	475	450	362	11	Tr 360x5	37
950	300	317	15	475	UHM365	67	482	455	367	11	Tr 365x5	38
964	300	321	16	514	UHM370	68	490	460	372	11	Tr 370x5	40
994	300	331	16	530	UHM375	68	495	465	377	11	Tr 375x5	41
1006	300	335	16	536	UHM380	69	500	472	382	11	Tr 380x5	41,5
1037	300	346	16	553	UHM385	69	505	478	387	11	Tr 385x5	42
1075	300	358	16	574	UHM395	69	512	488	397	11	Tr 395x5	43
1104	300	368	17	626	UHM400	71	525	495	402	11	Tr 400x5	47
1149	300	383	17	651	UHM410	71	535	505	412	11	Tr 410x5	48
1162	300	387	17	658	UHM415	71	540	510	417	11	Tr 415x5	49
1174	300	391	17	665	UHM420	72	545	517	422	12	Tr 420x5	50
1198	300	399	17	679	UHM430	74	555	527	432	12	Tr 430x5	52
1211	300	404	17	686	UHM435	74	560	533	437	12	Tr 435x5	53
1289	300	430	17	731	UHM440	74	565	538	442	12	Tr 440x5	54
1315	300	438	17	745	UHM450	76	580	548	452	12	Tr 450x5	58
1341	300	447	18	805	UHM460	76	590	560	462	12	Tr 460x5	59,5
1367	300	456	18	820	UHM470	76	600	570	472	12	Tr 470x5	61
1393	300	464	18	836	UHM480	76	612	582	482	12	Tr 480x5	63
1555	300	518	19	985	UHM490	80	625	593	492	13	Tr 490x5	69
1583	300	528	20	1056	UHM500	80	635	605	502	13	Tr 500x5	70

