

• FORCE	10 - 20 t
• STROKE	150 mm
• MAX WORKING PRESSURE	700 bar

UJ

EUROJACK HEAD AND TOE LIFTING JACK

FEATURES

This power jack with adjustable lifting toe is designed to lift large loads from very low positions. They are provided with extendable bases to ensure maximum stability.

The lifting toe can be positioned at three different levels with only 25 mm minimum clearance needed. The head of the jack may also be used to lift vertically, or if the jack is turned onto its side it can be used for pushing.



For the 20 ton model reduce the load to 15 and 10 ton respectively on the 2nd and 3rd level.



If used in pairs connect the lifters in parallel so that they receive the same force.

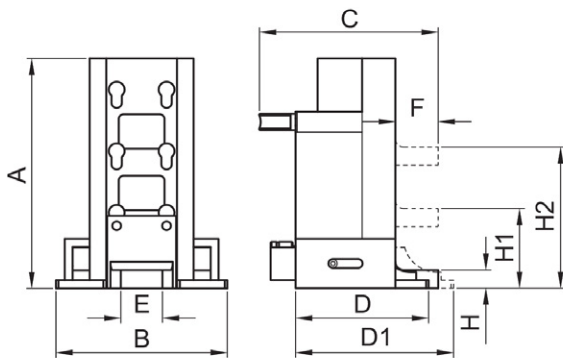


Hand pump model **PN131** is the recommended pump to operate the **UJ** power.



OPERATIONAL AREAS

Particularly suitable for lifting, moving and levelling of machineries and heavy equipments from very low positions.



SELECTION CHART

Pushing force	Stroke	Oil volume	MODEL	Dimensions mm										Weight
				A	B	C	D	D1	E	F	H	H1	H2	
10 / 95	150	238	UJ10	280	206	215	160	190	50	50	25	100	175	22
20 / 199	150	498	UJ20	314	271	290	230	265	70	70	30	110	190	45

HYDRAULIC TOOLS