

• FORCE	5 t
• STROKE	150 mm

UMP

UNIVERSAL HYDRAULIC JACK PRIMUS

FEATURES

It's a compact hydraulic lifter with integrated hand pump and cylinder and it's manufactured in steel and aluminum.

Thanks to its special rubber reservoir it can be used in **any working position**.

A built in safety valve prevents overloads.

All models are supplied with a protection ring, a pushing saddle and a lifting toe.

The load can be lifted by the head, by the lifting toe or by the foot by using the available accessories such as eye-lefts and nipples. The hand wheel release valve allows an accurate and precise lowering of the load.

It can be used in environments with temperatures from -30°C up to +60°C.

OPERATIONAL AREAS

The special design of the PRIMUS-lifter allows it to be used in any working position which gives this jack a very wide range of heavy duty field applications.

Used widely in the mining, shipbuilding, railway and steel structural industries it is also suitable for use in rescue applications.

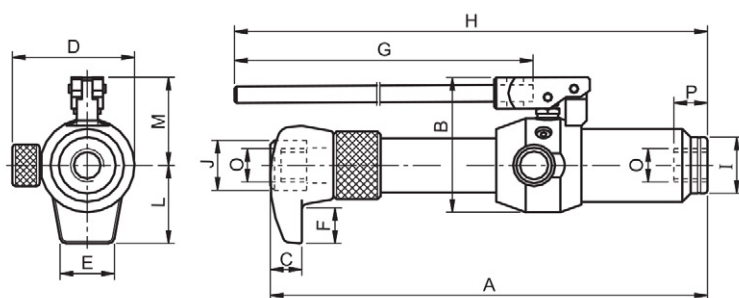
The PRIMUS-lifter is an essential piece of equipment for any repair facility.

OPTIONS

- **S Version, (UMP5M150WS)** Tool without bracket.

ACCESSORIES

- **ZUN5 Nipple**, necessary to screw the clevis eye on the top side.
- **ZEU5 Clevis eye**, it can be screwed on the rod (without nipple) or on top side of the cylinder (with nipple). Hole dimensions 22 mm.



SELECTION CHART

Pushing force	Stroke	Lift per handle stroke	Handle effort	Reservoir capacity	MODEL	Dimensions mm											Weight			
						A	B	C	D	E	F	G	H	I	J	L		M	O	P
5 t	150 mm	1,3 mm	275 N	260 cm ³	UMP5M150WS	416	130	30	116	48	35	400	565	54	48	75	85	M32x2	20	9,3

HYDRAULIC TOOLS