

# CA1014 MAINTENANCE SET



## Advantages

- Made of a series of attachments that combined with the pump, cylinder and hose, enable configuration of specific tools designed for various operations such as pushing, separating, joining, lifting, compressing, stretching and fixing.
- 10T & 20T model available.
- Supplied in a storage/transport case.

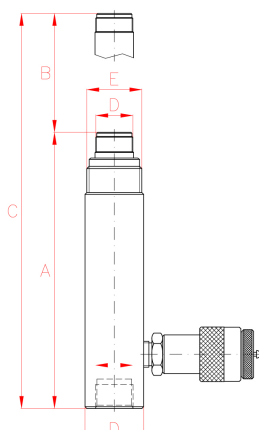
## WARNING

The cylinder provides the indicated nominal force, but as some attachments can induce cylinder side loading, the unit can only be used at 50% of its capacity, at a

**MAXIMUM WORKING PRESSURE OF 350 BAR.**

Capacity	Model	A	B	C	D	E	R	Weight
Tn		mm	mm	mm	mm	mm	mm	kg
10	KC01014	332	135	467	60	M56x2	M42x2.5	4.5

# CA1014 MAINTENANCE SET



## MAINTENANCE SET

# CA1014

Capacity: 10 Tn  
Pressure: 350 Bar

No.	Description CA1014	Quantity
1	Pump W10407	1
2	Hose	1
3	Male Quick Coupler	1
4	Cylinder KC01014	1
5	Tube M 130 mm	1
6	Tube L 230 mm	1
7	Tube X 480 mm	1
8	Tube XL 700 mm	1
9	Collar Toe Ram	1
10	Collar Toe Plunger	1
11	Pipe Coupling	3
12	Male Connector	1
13	Saddle	1
14	Rubber Head	2
15	Base	1
16	"V" Base	1
17	Wedge Head	1
18	Slip Lock Extension	1
19	Locking Pin	2
20	Collar Clamp Head	1
21	Lock-on Clamp Toe	1
22	Spread Cylinder CY0108	1
23	Chain	1
24	Single Chain Plate	1
25	Double Chain Plate	1
	Case	1
	Weight (kg)	50

Available Options	Model
Pressure Gauge	G106
Gauge Adaptor	<b>RP52</b>

